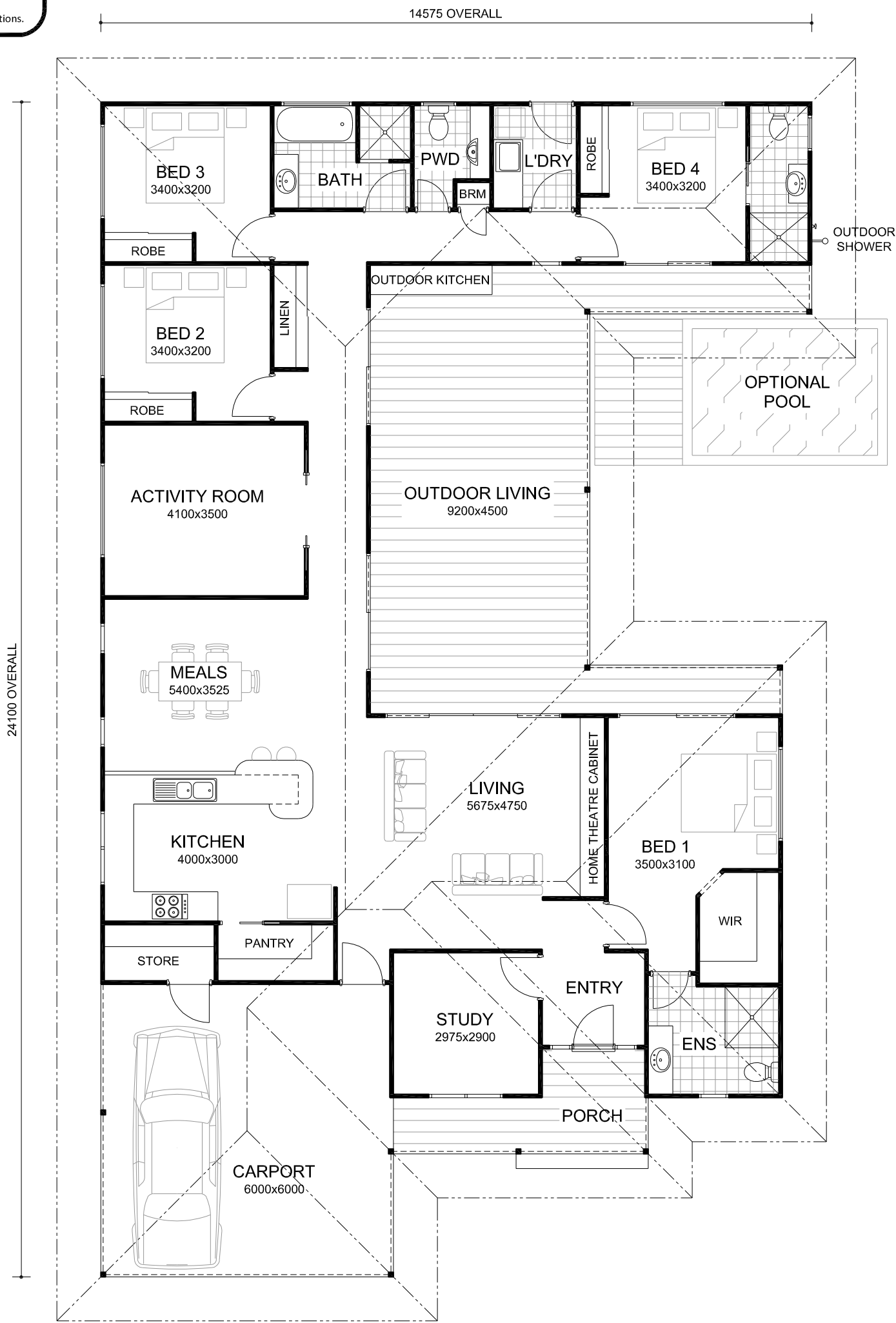
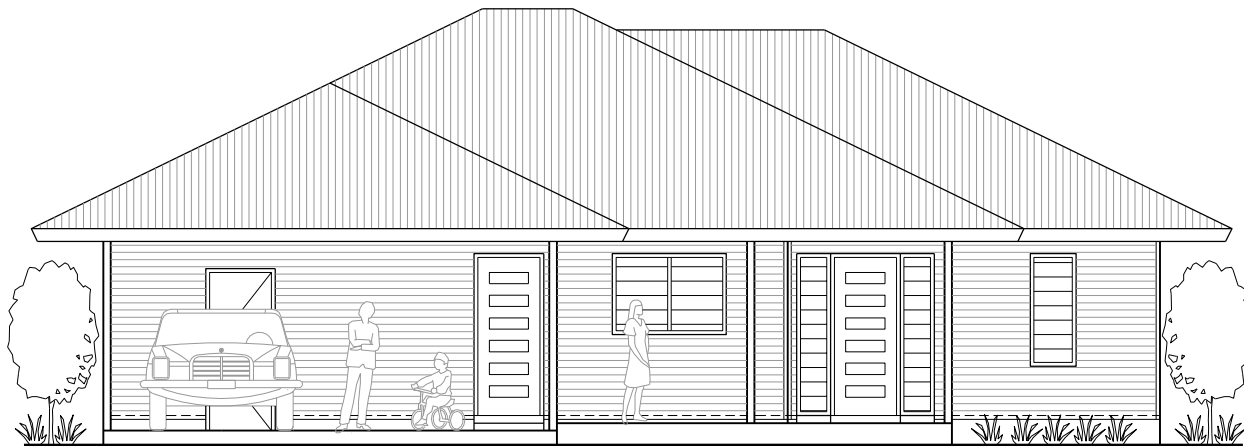


© This plan remains the property of PGM Constructions and must not be copied or duplicated without approval from PGM Constructions.

FLOOR AREAS	
RESIDENCE	193.8 m <sup>2</sup>
OUTDOOR LIVING	49.9 m <sup>2</sup>
PORCH	8.1 m <sup>2</sup>
CARPORT	35.8 m <sup>2</sup>
<b>TOTAL AREA</b>	<b>287.6 m<sup>2</sup></b>



FLOOR PLAN



ELEVATION



Phone: 9192 6561  
www.pgmconstructions.com.au

### THE MADDISON IV

Features large outdoor living area, 4 bedrooms & study, 3 bathrooms & powder room, plus activity room. (Suits Broome North Subdivision)