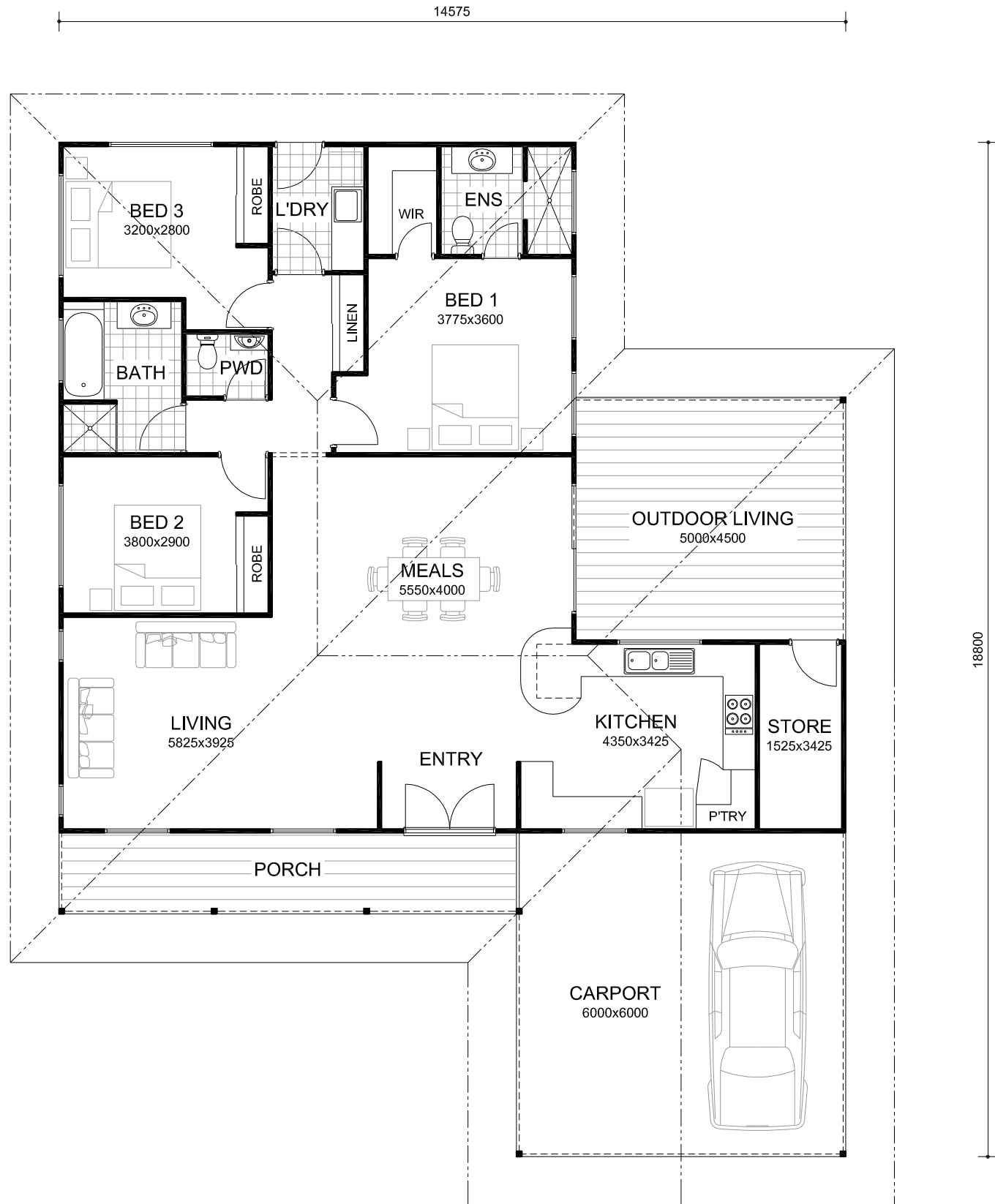


© This plan remains the property of PGM Constructions and must not be copied or duplicated without approval from PGM Constructions.

### FLOOR AREAS

RESIDENCE	140.4 m <sup>2</sup>
OUTDOOR LIVING	22.5 m <sup>2</sup>
PORCH	12.7 m <sup>2</sup>
CARPORT	36.6 m <sup>2</sup>
<b>TOTAL AREA</b>	<b>212.2 m<sup>2</sup></b>



FLOOR PLAN



ELEVATION



Phone: 9192 6561  
www.pgmconstructions.com.au

### THE MICHELLE

Open plan living, modern kitchen, outdoor area 3 bedrooms, 2 bathrooms and powder room plus generous sized storeroom. Optional front elevation.