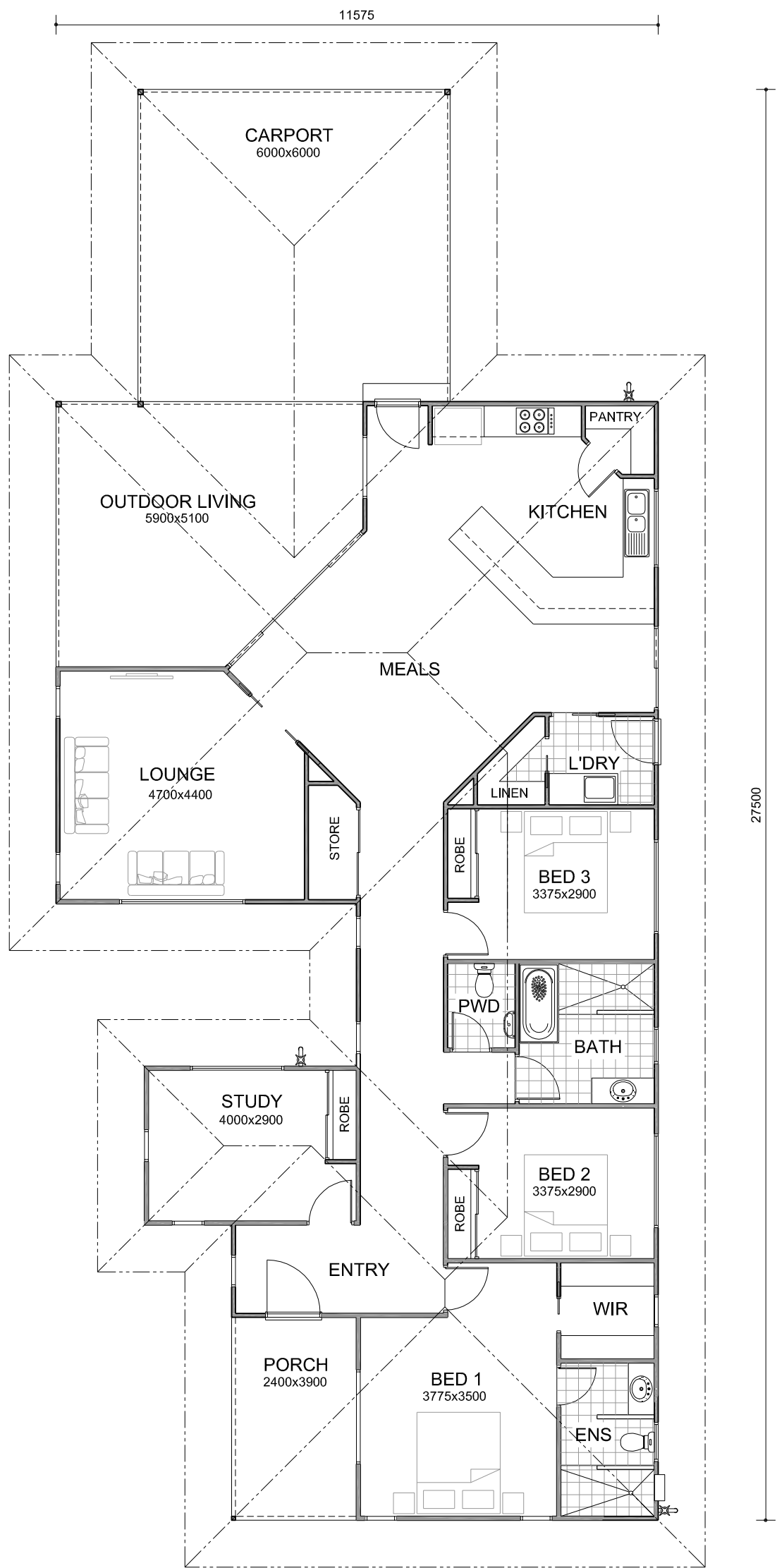
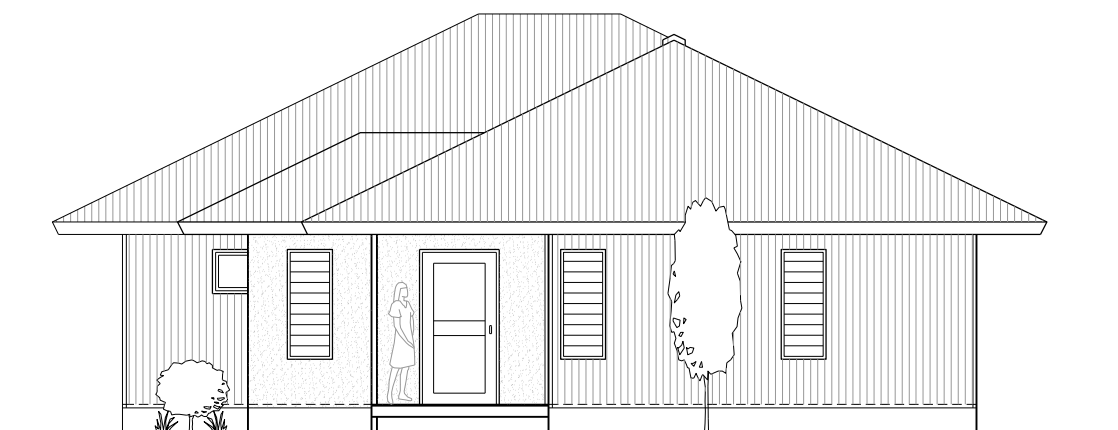


© This plan remains the property of PGM Constructions and must not be copied or duplicated without approval from PGM Constructions.

FLOOR AREAS	
RESIDENCE	170.5 m ²
OUTDOOR LIVING	26.5 m ²
PORCH	9.4 m ²
CARPORT	36.0 m ²
TOTAL AREA	242.4 m²



FLOOR PLAN



ELEVATION



Phone: 9192 6561
www.pgmconstructions.com.au

THE HAYDEN

Modern family home with open living entertaining areas. Includes 3 bedrooms & study, 2 bathrooms plus powder room. Specifically designer for corner lots.