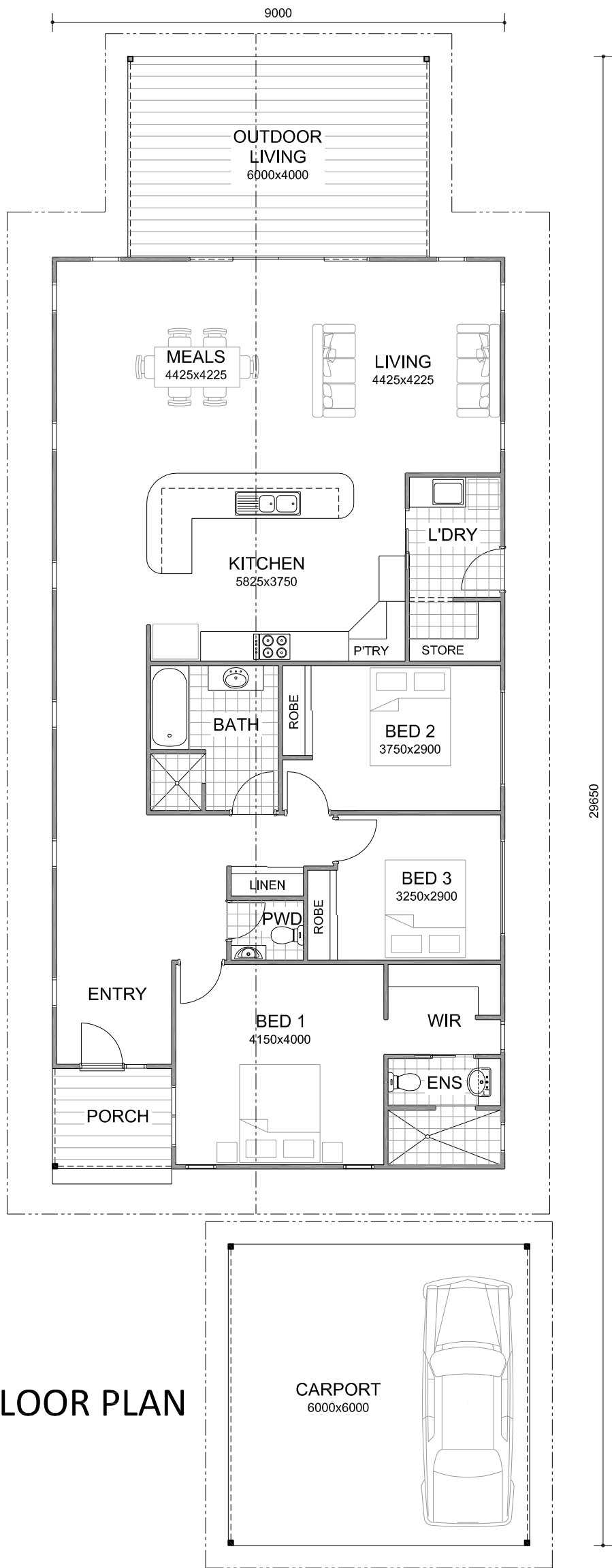
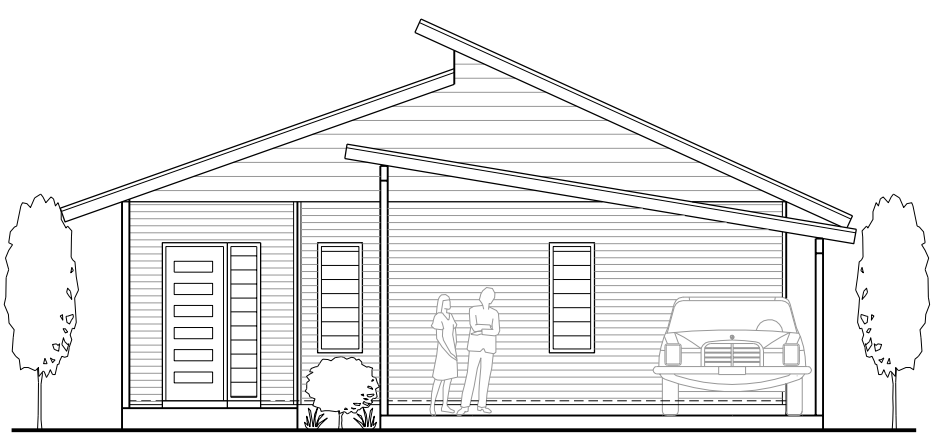


© This plan remains the property of PGM Constructions and must not be copied or duplicated without approval from PGM Constructions.

FLOOR AREAS	
RESIDENCE	158.6 m <sup>2</sup>
OUTDOOR LIVING	24.0 m <sup>2</sup>
PORCH	4.7 m <sup>2</sup>
CARPORT	36.0 m <sup>2</sup>
<b>TOTAL AREA</b>	<b>223.3 m<sup>2</sup></b>



FLOOR PLAN



ELEVATION

**PGM CONSTRUCTIONS** Phone: 9192 6561  
[www.pgmconstructions.com.au](http://www.pgmconstructions.com.au)

**THE ANTHONY**  
 Modern family home with open living entertaining areas. Includes 3 bedrooms, 2 bathrooms plus powder room. Especially suitable for narrow lots.